

Cape Fear RPO

Brunswick County ❖ Columbus County ❖ Pender County

RURAL TRANSPORTATION COORDINATING COMMITTEE

MARCH 27, 2024

Roll Call

Introduction	Presentations	Regular Business	Reports / Updates	Conclusion
--------------	---------------	------------------	-------------------	------------

Agenda Review

1. Call to Order
2. Roll Call
3. Agenda Review
4. Approval of Minutes
5. Public Comment
6. **NC Ports Resolution**
7. P7.0 Local Input Point Methodology
8. FY25 Planning Work Program
9. IMD Multimodal Planning Grants
10. 2024 Meeting Schedule
11. Reports/Updates
12. Open Discussion
13. Adjourn

Introduction	Presentations	Regular Business	Reports / Updates	Conclusion
--------------	---------------	------------------	-------------------	------------

RTCC Meeting Minutes

Review of the minutes from February 7, 2024

Introduction	Presentations	Regular Business	Reports / Updates	Conclusion
--------------	---------------	------------------	-------------------	------------

Public Comment Period

Introduction	Presentations	Regular Business	Reports / Updates	Conclusion
--------------	---------------	------------------	-------------------	------------

Resolution of Support: NC Ports

NC Ports has requested a Resolution of Support from the Cape Fear RPO for their application to the EPA's Clean Ports Program to fund zero emissions equipment at the Port of Wilmington.

Staff requests a motion to recommend approval of this resolution to the RTAC, who will meet on Friday, Apr. 12th at 9:00 AM

P7.0 Local Input Point Methodology

(1) P7.0 Recap

(2) Need for Local Input

(3) LIP Criteria

(4) Ranking Approach

(5) Point Assignment

(6) Schedule

Cape Fear RPO

P7.0 Local Input Prioritization Methodology

NCDOT approval _____

CFRPO RTAC approval _____

INTRODUCTION

The Cape Fear RPO (CFRPO) is required by state law to develop a local input methodology for prioritizing all transportation projects (aviation, bicycle and pedestrian, ferry, highway, public transportation, and rail) within the RPO boundary that compete for state and federal funding, and to submit the methodology to the NC Dept. of Transportation for approval. This Local Input Prioritization Methodology applies within the Cape Fear RPO planning boundary, which includes the counties of Brunswick (partial), Columbus, and Pender (partial).

The RPO has developed this prioritization methodology in an effort to satisfy the quantitative, data-driven requirements of the STI (Strategic Transportation Investments) law while protecting the discretion of local officials by incorporating subjective, qualitative local input where possible. STI establishes a funding formula which allocates available revenues based on data-driven scoring and local input. It is used to develop NCDOT's State Transportation Improvement Program (STIP), which identifies the transportation projects that will receive funding during a specified 10-year period.

P7.0 Recap

Prioritization = assigning data and scores to projects

STIP = State Transportation Improvement Program
= 10-year document of project funding and schedules

Programming = assigning funding and schedules to projects

P7.0 Recap

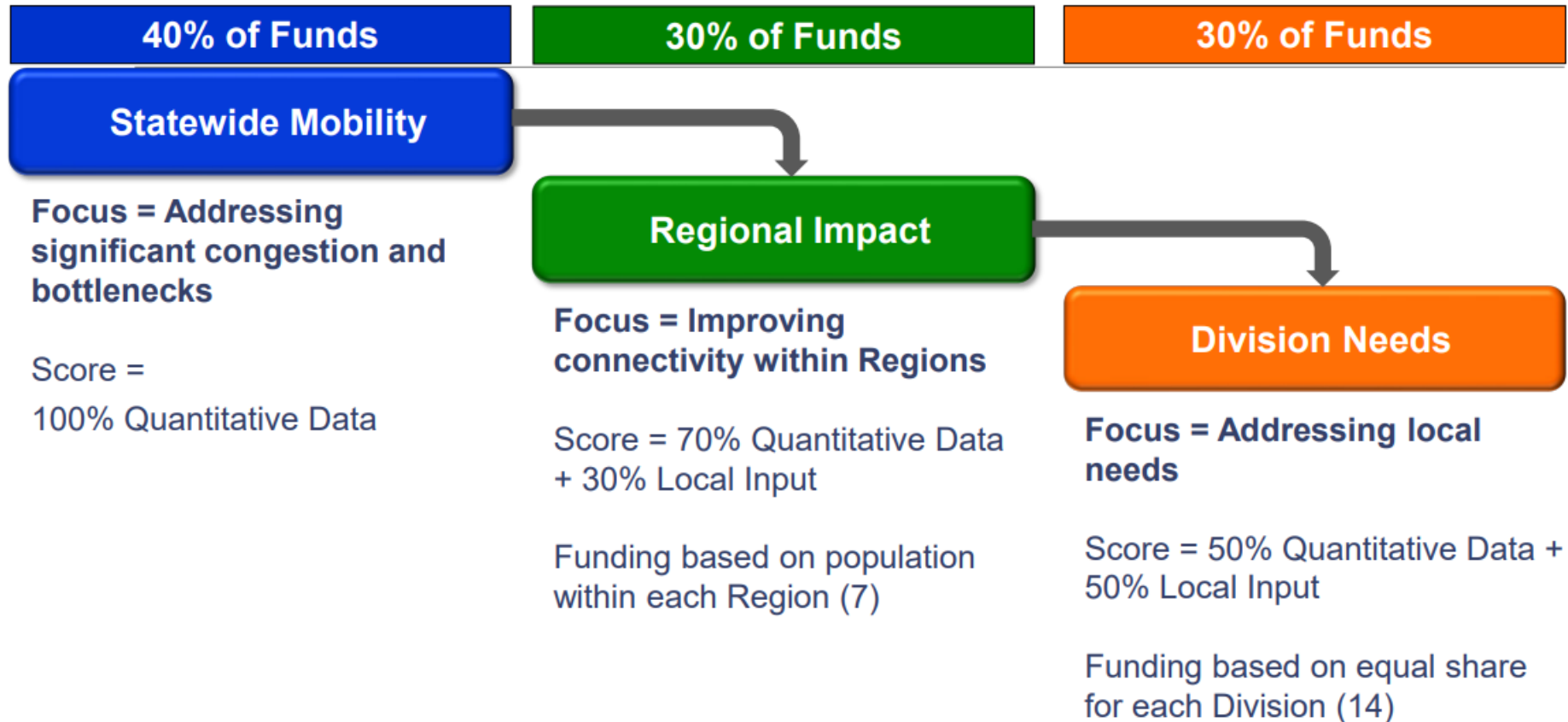


P7.0 Recap

- June 2023** Prioritization 101 for RTCC and RTAC
- July 2023** County Meetings to discuss project needs
- August 2023** Draft Project Lists reviewed by RTCC and RTAC
- September 2023** Final Project Lists approved by RTAC
- October 2023** Projects submitted to NCDOT by RPO Staff
- May 2024** Project scores released by NCDOT

P7.0 Recap	Need for Local Input	LIP Criteria	Ranking Approach	Point Assignment	Schedule
-------------------	-----------------------------	---------------------	-------------------------	-------------------------	-----------------

Local Input Point Introduction



Local Input Point Introduction

The Cape Fear RPO has **1,300** local input points available at both the Regional Impact and Division Needs tiers.

Projects may receive no more than **100** total points.

Local Input Point Criteria

<p>P7.0 Quantitative Score</p> <p>(Out of 100 pts)</p>	<p>Division Priority</p> <table><tr><td>HIGH</td><td>(100 pts)</td></tr><tr><td>MED</td><td>(50 pts)</td></tr><tr><td>LOW</td><td>(25 pts)</td></tr><tr><td>NONE</td><td>(0 pts)</td></tr></table>	HIGH	(100 pts)	MED	(50 pts)	LOW	(25 pts)	NONE	(0 pts)	<p>County Priority</p> <table><tr><td>HIGH</td><td>(100 pts)</td></tr><tr><td>MED</td><td>(75 pts)</td></tr><tr><td>LOW</td><td>(50 pts)</td></tr><tr><td>NONE</td><td>(0 pts)</td></tr></table>	HIGH	(100 pts)	MED	(75 pts)	LOW	(50 pts)	NONE	(0 pts)	<p>Project Development</p> <table><tr><td>Feasibility Study</td><td>(10 pts)</td></tr><tr><td>Prelim. Design</td><td>(10 pts)</td></tr><tr><td>Prior STIP</td><td>(10 pts)</td></tr><tr><td>ROW</td><td>(10 pts)</td></tr><tr><td>Sibling Project</td><td>(20 pts)</td></tr><tr><td>Current STIP</td><td>(40 pts)</td></tr></table>	Feasibility Study	(10 pts)	Prelim. Design	(10 pts)	Prior STIP	(10 pts)	ROW	(10 pts)	Sibling Project	(20 pts)	Current STIP	(40 pts)
HIGH	(100 pts)																														
MED	(50 pts)																														
LOW	(25 pts)																														
NONE	(0 pts)																														
HIGH	(100 pts)																														
MED	(75 pts)																														
LOW	(50 pts)																														
NONE	(0 pts)																														
Feasibility Study	(10 pts)																														
Prelim. Design	(10 pts)																														
Prior STIP	(10 pts)																														
ROW	(10 pts)																														
Sibling Project	(20 pts)																														
Current STIP	(40 pts)																														

Ranking Approach: Regional

**P7.0
Quantitative
Score**

(Out of 100 pts)

50%

Division Priority

HIGH	(100 pts)
MED	(50 pts)
LOW	(25 pts)
NONE	(0 pts)

20%

County Priority

HIGH	(100 pts)
MED	(75 pts)
LOW	(50 pts)
NONE	(0 pts)

20%

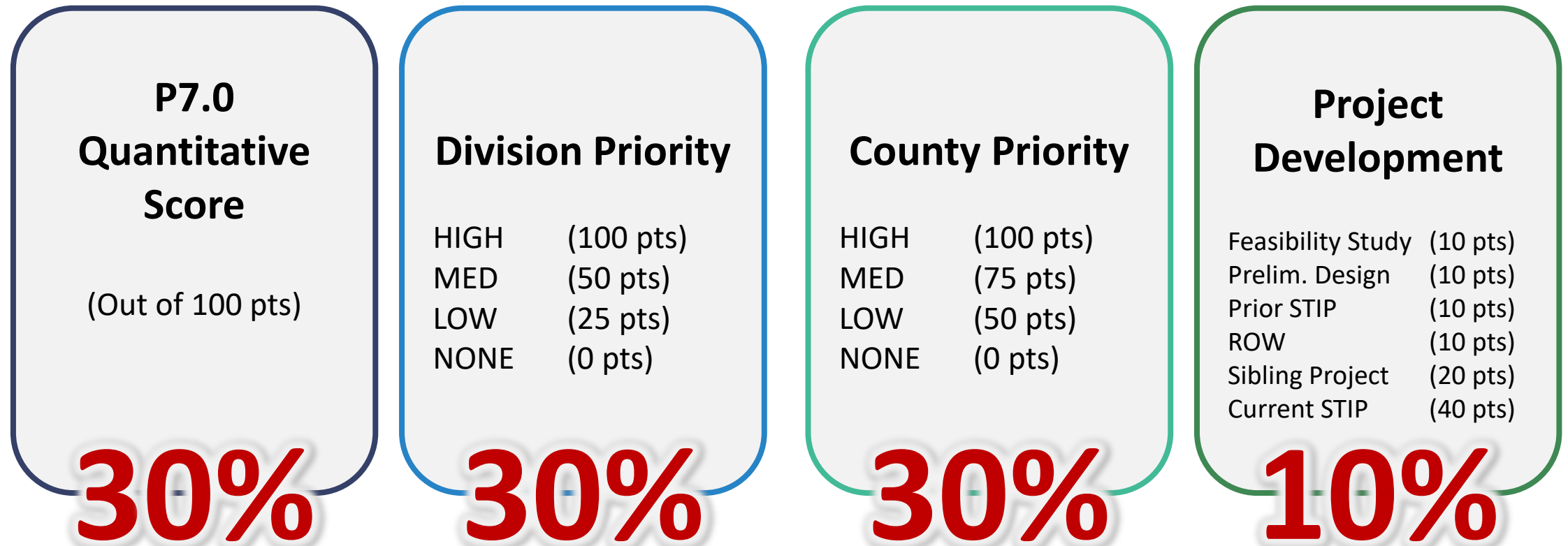
**Project
Development**

Feasibility Study	(10 pts)
Prelim. Design	(10 pts)
Prior STIP	(10 pts)
ROW	(10 pts)
Sibling Project	(20 pts)
Current STIP	(40 pts)

10%

P7.0 Recap	Need for Local Input	LIP Criteria	Ranking Approach	Point Assignment	Schedule
------------	----------------------	--------------	------------------	------------------	----------

Ranking Approach: Division



Point Assignment Process

Preliminary Points	Assigned at Regional and Division tiers based on rankings	
Method	(1) Top 2 scoring highway projects per County	[6 total]
	(2) Top 3 scoring non-highway projects	[3 total]
	(3) Remaining points cascade to next highest scores	[4 min.]
Flex Policy	Up to 500 points can be transferred from one category to the other	
Final Point Assignment	Approved by RTAC	

Schedule

Spring 2024

RTCC to review LIP Methodology; RTAC to approve.

May 2024

Methodology to be approved by NCDOT

P7.0 Quantitative Scores released by NCDOT

May-Aug 2024

Regional Impact Local Input Points

Sep-Nov 2024

Division Needs Local Input Points

January 2025

Draft 2026-2035 STIP

This process is to be open and transparent. Records of each step will be available to public on the RPO website and all RPO meetings are open to the public.

P7.0 Local Input Point Methodology

The Cape Fear RPO is required by state law to develop a local input methodology for prioritizing all transportation projects within the RPO boundary that compete for state and federal funding.

RPO staff requests a motion to recommend approval of the P7.0 Local Input Point Methodology to the RTAC, who will meet on Friday, Apr. 12th at 9:00 AM

FY24-25 Planning Work Program

TASK CODE	WORK CATEGORY	RPO PROGRAM FUNDS			
		LOCAL	State	FEDERAL	TOTAL
		5%	15%	80%	100%
I. DATA COLLECTION AND ASSESSMENT					
I-1	DATA COLLECTION AND ASSESSMENT	\$ 675	\$ 2,025	\$ 10,800	\$ 13,500
I-1.1	Highway				
I-1.2	Other Modes				
I-1.3	Socioeconomic				
I-1.4	Title VI				
II. TRANSPORTATION PLANNING					
II-1	COMPREHENSIVE TRANSPORTATION PLAN (CTP) DEVELOPMENT	\$ 400	\$ 1,200	\$ 6,400	\$ 8,000
II-1.1	Develop CTP Vision				
II-1.2	Conduct CTP Needs Assessment				
II-1.3	Analyze Alternatives and Environmental Screening				
II-1.4	Develop Final Plan				
II-1.5	Adopt Plan				
II-2	PRIORITIZATION	\$ 700	\$ 2,100	\$ 11,200	\$ 14,000
II-2.1	Project Prioritization				
II-3	PROGRAM AND PROJECT DEVELOPMENT	\$ 200	\$ 600	\$ 3,200	\$ 4,000
II-3.1	STIP Participation				
II-3.2	Merger / Project Development				
II-4	GENERAL TRANSPORTATION PLANNING	\$ 1,600	\$ 4,800	\$ 25,600	\$ 32,000
II-4.1	Regional and Statewide Planning				
II-4.2	Special Studies, Projects and Other Trainings				
II-4.2.1	Special Study #1 - insert name of consultant-led study here	\$ -	\$ -	\$ -	\$ -
II-4.2.2	Special Study #2 - insert name of consultant-led study here	\$ -	\$ -	\$ -	\$ -

III. ADMINISTRATION OF TRANSPORTATION PLANNING AND POLICIES					
III-1	ADMINISTRATIVE ACTIVITIES	\$ 1,750	\$ 5,250	\$ 28,000	\$ 35,000
III-1.1	Administrative Documents				
III-1.2	TCC / TAC Work Facilitation; Ethics Compliance				
III-1.3	Program Administration				
IV. DIRECT COSTS					
IV-1	PROGRAMMATIC DIRECT CHARGES	\$ 500	\$ 1,500	\$ 8,000	\$ 10,000
IV-1.1	Program-wide Direct Costs				
IV-2	ADVERTISING	\$ 5	\$ 15	\$ 80	\$ 100
IV-2.1	News Media Ads				
IV-3	LODGING, MEALS, INCIDENTALS	\$ 75	\$ 225	\$ 1,200	\$ 1,500
IV-3.1	Hotel Costs				
IV-3.2	Meal Costs				
IV-3.3	Incidentals				
IV-4	POSTAGE	\$ 5	\$ 15	\$ 80	\$ 100
IV-4.1	Mailings				
IV-5	REGISTRATION / TRAINING	\$ 25	\$ 75	\$ 400	\$ 500
IV-5.1	Conference Registration				
IV-5.2	Meeting / Workshop / Training Fees				
IV-6	TRAVEL	\$ 250	\$ 750	\$ 4,000	\$ 5,000
IV-6.1	Mileage Reimbursement				
IV-6.2	Car Rental Costs				
IV-6.3	Other Travel Expenses				
V. INDIRECT COSTS					
V-1	INDIRECT COSTS	\$ 1,465	\$ 4,395	\$ 23,440	\$ 29,300
V-1.1	Incurred Indirect Costs				
RPO OPERATIONAL EXPENSE TOTAL		\$ 7,650	\$ 22,950	\$ 122,400	\$ 153,000

FY24-25 Planning Work Program

FY 2025 Cape Fear RPO Allocation				
5% local match	15% State funds (Local Match Assistance per NCGS 136-214)	80% Federal SPR funds	Total maximum reimbursable amount from NCDOT (State and Federal)	Total not-to-exceed work plan Federal + State+ local match
\$7,650	\$22,950	\$122,400	\$145,350	\$153,000

RPO staff requests a motion to recommend approval of the FY24-25 PWP to the RTAC, who will meet on Friday, Apr. 12th at 9:00 AM

Resolution of Support: IMD Multimodal Planning Grants

The Town of Oak Island and the City of Southport have requested Resolutions of Support from the Cape Fear RPO for their applications to NCDOT IMD's Multimodal Planning Grants Program.

Staff requests a motion to recommend approval of these resolutions to the RTAC, who will meet on Friday, Apr. 12th at 9:00 AM

2024 RTCC Meeting Schedule

RTCC	RTAC	Deadlines/Important Dates
Wed 2/7/24	Fri 2/16/24	Draft FY 24-25 PWP 2/28. New Appointments/Elections. Title VI Policy Update
Wed 3/27/24	Fri 4/12/24	RTAC Ethics Paperwork due 4/15. Final FY 24-25 PWP 5/31. Local Input Point Methodology due 5/1
Wed 6/5/24	Fri 6/14/24	P7.0 Regional Impact Local Input Point Assignment (1 of 2). Final FY 23-24 PWP amendment 6/30.
Wed 8/7/24	Fri 8/16/24	P7.0 Regional Impact Local Input Point Assignment (2 of 2).
Wed 10/2/24	Fri 10/11/24	P7.0 Division Needs Local Input Point Assignment (1 of 2).
Wed 12/4/24	Fri 11/15/24	P7.0 Division Needs Local Input Point Assignment (2 of 2). Expiring Positions/New Appointments. Draft FY 25-26 PWP 2/28.

Introduction	Presentations	Regular Business	Reports / Updates	Conclusion
--------------	---------------	------------------	-------------------	------------

CFRPO Staff Report

Revisions to the 2024-2033 STIP

Introduction	Presentations	Regular Business	Reports / Updates	Conclusion
--------------	---------------	------------------	-------------------	------------

NC Ports Update

Stephanie Ayers

(910) 746-6371

Stephanie.ayers@ncports.com



Introduction	Presentations	Regular Business	Reports / Updates	Conclusion
--------------	---------------	------------------	-------------------	------------

Ferry Update

Cat Peele

(252) 423-5129

cdpeelee@ncdot.gov



NCDOT Division 3 Report

Adrienne Cox

(910) 341-2000

amcox1@ncdot.gov

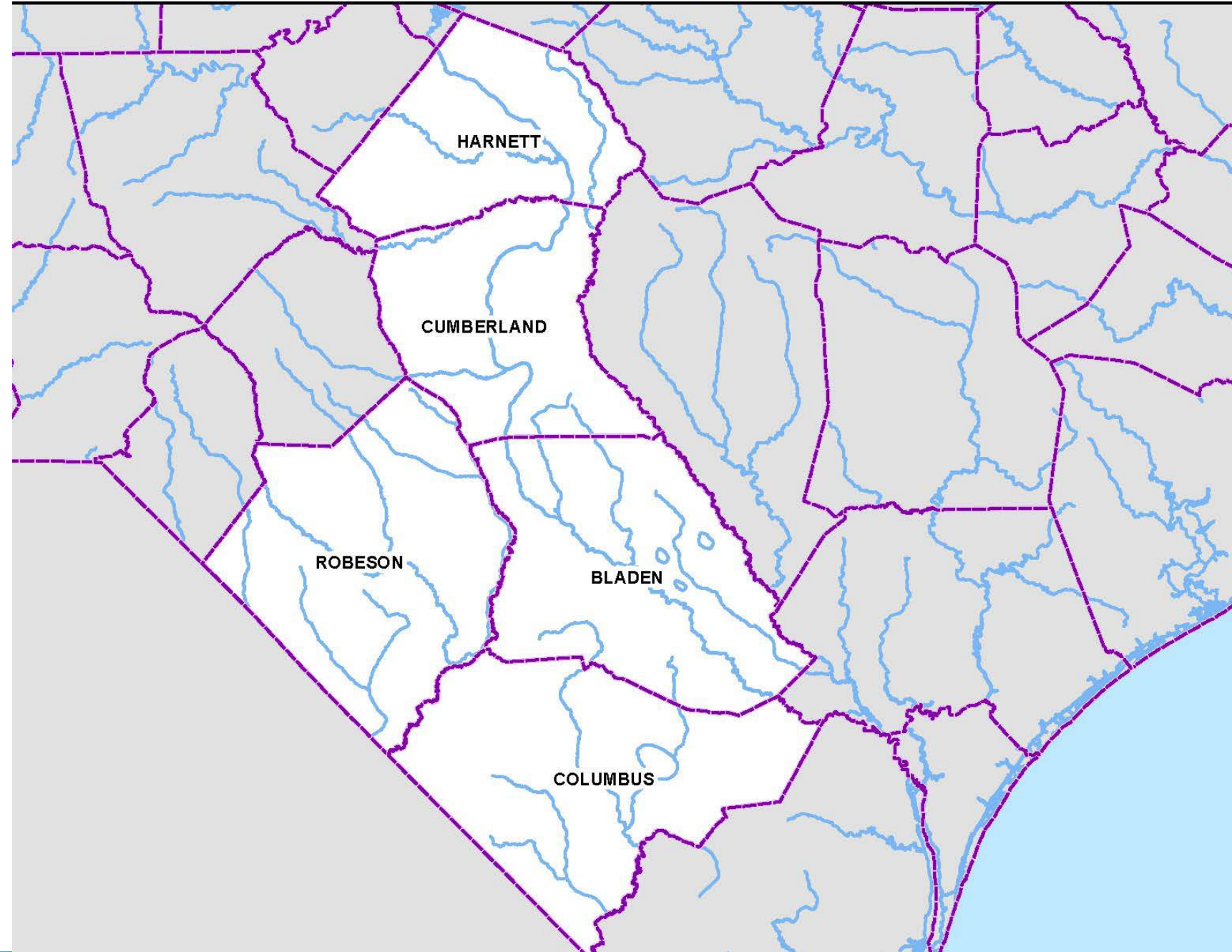


NCDOT Division 6 Report

Bill Hammond

(910) 364-0603

bhammond@ncdot.gov



NCDOT TPD Report



Nazia Sarder

(919) 707-0980

nsarder@ncdot.gov

Introduction	Presentations	Regular Business	Reports / Updates	Conclusion
--------------	---------------	------------------	-------------------	------------

NCDOT IMD Report

Kim Nguyen

(919) 707-4676

kpnguyen1@ncdot.gov



Integrated Mobility Division
N.C. DEPARTMENT OF TRANSPORTATION

Wilmington MPO Report



WILMINGTON URBAN AREA
METROPOLITAN PLANNING ORGANIZATION

Vanessa Lacer

(910) 341-3234

vanessa.lacer@wilmingtonnc.gov

Grand Strand MPO Report

Mark Hoeweler

(843) 436-6130

mhoeweler@wrcog.org



Open Discussion

General questions, comments, and other discussions

Adjourn

Next meeting will be June 5, 2024